



Ossicular Prostheses

Ossicular Prosthesis

Offset ALTO Total

Ref. #	Material	Head Size	Adjustable Length	Distal End Dia.
600	Titanium	2.50mm x 3.50mm	2.50mm to 7.00mm	0.8mm



Offset ALTO Partial

Ref. #	Material	Head Size	Adjustable Length	Distal End Dia.
650	Titanium	2.50mm x 3.50mm	1.50mm to 5.60mm	1.45mm cup



Centered ALTO Total

Ref. #	Material	Head Size	Adjustable Length	Distal End Dia.
605	Titanium	3.00mm	2.50mm to 7.00mm	0.8mm



Centered ALTO Total w/ Integrated Shoe

Ref. #	Material	Head Size	Adjustable Length	Distal End
604	Titanium	3.00mm	2.50mm to 7.00mm	0.8mm x 2.30mm

Designed in conjunction with Jacques Herzog, MD, St. Louis, MO



Centered ALTO Partial

Ref. #	Material	Head Size	Adjustable Length	Distal End Dia.
655	Titanium	3.00mm	1.50mm to 5.60mm	1.45mm cup



Offset ALTO Concise Partial

Ref. #	Material	Head Size	Adjustable Length	Distal End
650-075	Titanium	2.50mm x 3.50mm	0.75mm to 5.75mm	1.45mm cup


Centered ALTO Concise Partial

Ref. #	Material	Head Size	Adjustable Length	Distal End
655-075	Titanium	3.00mm	0.75mm to 5.75mm	1.45mm cup


Centered ALTO Byte Partial

Ref. #	Material	Head Size	Adjustable Length	Distal End
655B	Titanium	3.00mm	2.25mm to 5.60mm	Adjustable

*May not be available in all countries


Offset Nano ALTO Byte Partial

Ref. #	Material	Head Size	Adjustable Length	Distal End
654	Titanium	1.50mm x 2.50mm	2.25mm to 5.60mm	Adjustable

*May not be available in all countries


Silverstein ALTO Total w/ Tack

Ref. #	Material	Head Size	Adjustable Length	Distal End Dia.
601	Titanium	2.50mm x 3.50mm	2.50mm to 7.00mm	0.8mm

Designed in conjunction with Herb Silverstein, MD, Sarasota, FL



Ossicular Prosthesis

Offset Nano ALTO Total

Ref. #	Material	Head Size	Adjustable Length	Distal End Dia.
603	Titanium	1.50mm x 2.50mm	2.50mm to 7.00mm	0.8mm

Designed in conjunction with Peter Weber, MD, Boston, MA



Offset Nano ALTO Total w/ Integrated Shoe

Ref. #	Material	Head Size	Adjustable Length	Distal End
607	Titanium	1.50mm x 2.50mm	2.50mm to 7.00mm	0.86mm x 1.27mm

Designed in conjunction with Peter Weber, MD, Boston, MA



Offset Nano ALTO Partial

Ref. #	Material	Head Size	Adjustable Length	Distal End Dia.
653	Titanium	1.50mm x 2.50mm	1.50mm to 5.60mm	1.45mm cup

Designed in conjunction with Peter Weber, MD, Boston, MA



Centered Nano ALTO Total

Ref. #	Material	Head Size	Adjustable Length	Distal End Dia.
611	Titanium	1.50mm x 2.50mm	2.50mm to 7.00mm	0.8mm

Designed in conjunction with Bruce Gantz, MD, Iowa City, IA



Centered Nano ALTO Partial

Ref. #	Material	Head Size	Adjustable Length	Distal End Dia.
651	Titanium	1.50mm x 2.50mm	1.50mm to 5.60mm	1.45mm cup

Designed in conjunction with Bruce Gantz, MD, Iowa City, IA



Owens Assure ALTO Total w/ Integrated Shoe

Ref. #	Material	Head Size	Adjustable Length	Distal End
602	Titanium	2.00mm x 2.50mm	2.50mm to 7.00mm	0.8mm x 2.30mm

Designed in conjunction with Robert Owens, MD, Dallas, TX



Owens Assure ALTO Total

Ref. #	Material	Head Size	Adjustable Length	Distal End Dia.
602R	Titanium	2.00mm x 2.50mm	2.50mm to 7.00mm	0.8mm

Designed in conjunction with Robert Owens, MD, Dallas, TX



Owens Assure ALTO Partial

Ref. #	Material	Head Size	Adjustable Length	Distal End Dia.
652	Titanium	2.00mm x 2.50mm	1.50mm to 5.60mm	1.45mm cup

Designed in conjunction with Robert Owens, MD, Dallas, TX



Gluth ALTO Total

Ref. #	Material	Head Size	Adjustable Length	Distal End Dia.
648	Titanium	3.25mm x 4.00mm	2.50mm to 7.00mm	0.8mm

Designed in conjunction with Michael Gluth, MD, Chicago, IL



Gluth ALTO Partial

Ref. #	Material	Head Size	Adjustable Length	Distal End Dia.
678	Titanium	3.25mm x 4.00mm	1.50mm to 5.60mm	1.45mm cup

Designed in conjunction with Michael Gluth, MD, Chicago, IL



Ossicular Prosthesis

HA ALTO Total

Ref. #	Material	Head Size	Adjustable Length	Distal End Dia.
620	HA/Titanium	1.80mm x 3.00mm	3.00mm to 7.00mm	0.8mm



HA ALTO Partial

Ref. #	Material	Head Size	Adjustable Length	Distal End Dia.
670	HA/Titanium	1.80mm x 3.00mm	2.00mm to 5.60mm	1.45mm cup



Bojrab ALTO Total

Ref. #	Material	Head Size	Adjustable Length	Distal End Dia.
625	HA/Titanium	1.50mm x 2.00mm	3.00mm to 7.00mm	0.8mm

Designed in conjunction with Dennis Bojrab, MD, Farmington Hills, MI



Bojrab ALTO Total w/ Integrated Shoe

Ref. #	Material	Head Size	Adjustable Length	Distal End
625B	HA /Titanium	1.50mm x 2.00mm	3.00mm to 7.00mm	0.86mm x 1.27mm

Designed in conjunction with Dennis Bojrab, MD, Farmington Hills, MI



Bojrab ALTO Partial

Ref. #	Material	Head Size	Adjustable Length	Distal End Dia.
675	HA/Titanium	1.50mm x 2.00mm	2.00mm to 5.60mm	1.45mm cup

Designed in conjunction with Dennis Bojrab, MD, Farmington Hills, MI



Bojrab ALTO Precut

Ref. #	Material	Head Size	Adjustable Length	Distal End Dia.
671	HA/Titanium	1.50mm x 2.00mm	2.00mm to 2.50mm	1.45mm cup

Designed in conjunction with Dennis Bojrab, MD, Farmington Hills, MI



Sataloff ALTO Total

Ref. #	Material	Head Size	Adjustable Length	Distal End Dia.
624	HA /Titanium	1.80mm x 3.00mm	3.00mm to 7.00mm	0.8mm

Designed in conjunction with Robert Sataloff, MD, Philadelphia, PA



Sataloff ALTO Partial

Ref. #	Material	Head Size	Adjustable Length	Distal End Dia.
674	HA/Titanium	1.80mm x 3.00mm	2.00mm to 5.60mm	1.45mm cup

Designed in conjunction with Robert Sataloff, MD, Philadelphia, PA



HA Lite ALTO Total

Ref. #	Material	Head Size	Adjustable Length	Distal End Dia.
630	HA/Titanium	3.00mm	3.00mm to 7.00mm	0.8mm



HA Lite ALTO Total w/ Integrated Shoe

Ref. #	Material	Head Size	Adjustable Length	Distal End
630B	HA/Titanium	3.00mm	3.00mm to 7.00mm	0.8mm x 2.30mm



Ossicular Prosthesis

HA Lite ALTO Partial

Ref. #	Material	Head Size	Adjustable Length	Distal End Dia.
685	HA/Titanium	3.00mm	2.00mm to 5.60mm	1.45mm cup



Dornhoffer ALTO Total w/ Shoe & Windows

Ref. #	Material	Head Size	Adjustable Length	Distal End
626	HA/Titanium	4.00mm x 3.25mm	3.00mm to 7.00mm	0.86mm x 1.27mm

Designed in conjunction with John Dornhoffer, MD, Little Rock, AR



Dornhoffer ALTO Total

Ref. #	Material	Head Size	Adjustable Length	Distal End Dia.
635	HA/Titanium	4.00mm x 3.25mm	3.00mm to 7.00mm	0.8mm

Designed in conjunction with John Dornhoffer, MD, Little Rock, AR



Dornhoffer ALTO Total w/ Windows

Ref. #	Material	Head Size	Adjustable Length	Distal End Dia.
637	HA/Titanium	4.00mm x 3.25mm	3.00mm to 7.00mm	0.8mm

Designed in conjunction with John Dornhoffer, MD, Little Rock, AR



Dornhoffer ALTO Partial

Ref. #	Material	Head Size	Adjustable Length	Distal End Dia.
695	HA/Titanium	4.00mm x 3.25mm	2.00mm to 5.60mm	1.45mm cup

Designed in conjunction with John Dornhoffer, MD, Little Rock, AR



Dornhoffer ALTO Partial w/ Windows

Ref. #	Material	Head Size	Adjustable Length	Distal End Dia.
687	HA/Titanium	4.00mm x 3.25mm	2.00mm to 5.60mm	1.45mm cup

Designed in conjunction with John Dornhoffer, MD, Little Rock, AR



Dornhoffer Fixed Length Partial

Ref. #	Material	Head Size	Length	Distal End Dia.
690	HA/Titanium	4.00mm x 3.25mm	2.00mm	1.45mm cup

Designed in conjunction with John Dornhoffer, MD, Little Rock, AR



Dornhoffer Fixed Length Partial w/ Windows

Ref. #	Material	Head Size	Length	Distal End Dia.
691	HA/Titanium	4.00mm x 3.25mm	2.00mm	1.45mm cup

Designed in conjunction with John Dornhoffer, MD, Little Rock, AR



Dornhoffer Footplate Shoe

Ref. #	Material	Length	Width	Height	ID
636-080	Titanium	1.40mm	1.09mm	1.14mm	0.8mm

Designed in conjunction with John Dornhoffer, MD, Little Rock, AR
Compatible with all Titanium Shaft Totals



Haberman ALTO Total Round Head

Ref. #	Material	Head Size	Adjustable Length	Distal End Dia.
608	HA/Titanium	3.30mm	3.00mm to 7.00mm	0.8mm

Designed in conjunction with Rex Haberman, MD, Minneapolis, MN



Ossicular Prosthesis

Haberman ALTO Partial Round Head

Ref. #	Material	Head Size	Adjustable Length	Distal End Dia.
659	HA/Titanium	3.30mm	2.00mm to 5.60mm	1.45mm cup

Designed in conjunction with Rex Haberman, MD, Minneapolis, MN



Haberman ALTO Partial Rectangle Head

Ref. #	Material	Head Size	Adjustable Length	Distal End Dia.
658	HA/Titanium	3.00mm x 2.00mm	2.00mm to 5.60mm	1.45mm cup

Designed in conjunction with Rex Haberman, MD, Minneapolis, MN



Moretz Delta ALTO Total

Ref. #	Material	Head Size	Adjustable Length	Distal End Dia.
647	HA/Titanium	2.20mm x 3.00mm	3.00mm to 7.00mm	0.8mm

Designed in conjunction with William Moretz, MD, Augusta, GA



Moretz Delta ALTO Partial

Ref. #	Material	Head Size	Adjustable Length	Distal End Dia.
697	HA/Titanium	2.20mm x 3.00mm	2.00mm to 5.60mm	1.45mm cup

Designed in conjunction with William Moretz, MD, Augusta, GA



Moretz ALTO Total

Ref. #	Material	Head Size	Adjustable Length	Distal End Dia.
612-001L	HA/Titanium	1.90mm x 5.60mm	3.00mm to 7.00mm	0.8mm
612-002R	HA/Titanium	1.90mm x 5.60mm	3.00mm to 7.00mm	0.8mm

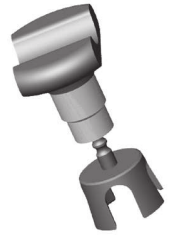
Designed in conjunction with William Moretz, MD, Augusta, GA



Wedge Incus Strut

Ref. #	Material	Head Size	Adjustable Length	Distal End Dia.
657	Titanium	2.30mm x 1.50mm	1.75mm to 2.25mm	1.45mm cup
656	Titanium	2.30mm x 1.50mm	2.25mm to 3.50mm	1.45mm cup

Designed in conjunction with Cliff Megerian, MD, Cleveland, OH,
Dennis Bojrab, MD, Farmington Hills, MI, Joseph Chen, MD, Toronto, Ontario, Canada



Kraus K-Helix Crown

Ref. #	Material	Coil Length	Distal End Dia.
756-300	Titanium	2.75mm	1.45mm cup

Designed in conjunction with Eric Kraus, MD, Greensboro, NC



Kraus K-Helix Piston

Ref. #	Material	Coil Length	Functional Length	Distal End Dia.
757-300	Titanium	2.75mm	4.70mm	0.6mm

Designed in conjunction with Eric Kraus, MD, Greensboro, NC



K-Helix Footplate Shoe

Ref. #	Material	Length	Width	Height	ID
636-060	Titanium	1.40mm	0.86mm	1.14mm	0.6mm



Ossicular Prostheses

Offset Duo ALTO Total w/ Stapes Adaptor

Ref. #	Material	Head Size	Adjustable Length	Torp Distal End Dia.	Cup Distal End Dia.
600A	Titanium	2.50mm x 3.50mm	2.00mm to 7.00mm	0.8mm	1.45mm cup

Designed in conjunction with Howard Francis, MD, Durham, NC



Centered Duo ALTO Total w/ Stapes Adaptor

Ref. #	Material	Head Size	Adjustable Length	Torp Distal End Dia.	Cup Distal End Dia.
605A	Titanium	3.00mm	2.00mm to 7.00mm	0.8mm	1.45mm cup

Designed in conjunction with Howard Francis, MD, Durham, NC



Strasnick Partial Tilt-Top

Ref. #	Material	Head Size	Length	Distal End Dia.
270-600	Titanium/Otosil	3.00mm	6.10mm	1.12mm

Designed in conjunction with Barry Strasnick, MD, Norfolk, VA



Strasnick Total Tilt-Top

Ref. #	Material	Head Size	Length	Distal End Dia.
220-800	Titanium/Otosil	3.00mm	8.00mm	0.9mm

Designed in conjunction with Barry Strasnick, MD, Norfolk, VA



Vincent Total

Ref. #	Material	Head Size	Length	Distal End Dia.
280	HA /Flpl	2.00mm x 2.50mm	8.60mm	0.4mm

Designed in conjunction with Robert Vincent, MD, Béziers, France



Vincent ALTO Total w/ Band

Ref. #	Material	Head Size	Adjustable Length	Distal End Dia.
614	HA /Titanium	2.00mm x 3.30mm	3.00mm to 7.00mm	0.8mm

Designed in conjunction with Robert Vincent, MD, Causse Ear Clinic, Béziers, France

*May not be available in all countries



Centered ALTO Total w/ Band

Ref. #	Material	Head Size	Adjustable Length	Distal End Dia.
617	Titanium	3.00mm	2.50mm to 7.00mm	0.8mm

*May not be available in all countries



HA Lite ALTO Total w/ Band

Ref. #	Material	Head Size	Adjustable Length	Distal End Dia.
618	HA /Titanium	3.00mm	3.00mm to 7.00mm	0.8mm

*May not be available in all countries



Bojrab ALTO Total w/ Band

Ref. #	Material	Head Size	Adjustable Length	Distal End Dia.
619	HA /Titanium	1.50mm x 2.00mm	3.00mm to 7.00mm	0.8mm

Designed in conjunction with Dennis Bojrab, MD, Farmington Hills, MI

*May not be available in all countries



Ossicular Prosthesis

Wehrs Single Notch Incus-Stapes

Ref. #	Material	Length	Distal End Dia.
209	HA/Otosil	9.14mm	1.00mm



Wehrs Single Notch Incus

Ref. #	Material	Length	Distal End Dia.
259	HA/Otosil	8.10mm	1.10mm



Wehrs Double Notch Incus-Stapes

Ref. #	Material	Length	Distal End Dia.
210	HA/Otosil	9.14mm	1.00mm



Wehrs Double Notch Incus

Ref. #	Material	Length	Distal End Dia.
260	HA/Otosil	8.10mm	1.10mm



Frisbee Partial

Ref. #	Length	Material	Head Size	Distal End Dia.
750-050	0.5mm	Titanium	3.00mm	1.17mm
750-100	1.00mm			
750-150	1.50mm			
751-200	2.00mm			
749-050	0.5mm	HA	3.00mm	1.17mm
749-100	1.00mm			
749-150	1.50mm			



Designed in conjunction with Herb Silverstein, MD, Sarasota, FL
 Designed in conjunction with Antonio De la Cruz, MD, Los Angeles, CA

Precise HA Lite Total

Material	Type	Shaft Dia.	Distal End Dia.	Length	Ref. #
HA/Titanium	Centered	0.2mm	0.8mm	3.00mm	720-300
				3.25mm	720-325
				3.50mm	720-350
				3.75mm	720-375
				4.00mm	720-400
				4.25mm	720-425
				4.50mm	720-450
				4.75mm	720-475
				5.00mm	720-500
				5.25mm	720-525
				5.50mm	720-550
				5.75mm	720-575
				6.00mm	720-600
				6.25mm	720-625
				6.50mm	720-650
				6.75mm	720-675
				7.00mm	720-700



Designed in conjunction with Michael Hoffer, MD, Miami, FL

Precise HA Lite Partial

Material	Type	Shaft Dia.	Distal End Dia.	Length	Ref. #
HA/Titanium	Centered	0.2mm	1.45mm cup	1.75mm	770-175
				2.00mm	770-200
				2.25mm	770-225
				2.50mm	770-250
				2.75mm	770-275
				3.00mm	770-300
				3.25mm	770-325
				3.50mm	770-350
				3.75mm	770-375
				4.00mm	770-400
				4.25mm	770-425
				4.50mm	770-450

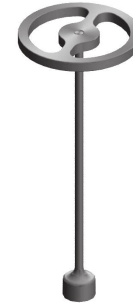


Designed in conjunction with Michael Hoffer, MD, Miami, FL

Ossicular Prosthesis

Precise Centered Total

Material	Type	Shaft Dia.	Distal End Dia.	Length	Ref. #
Titanium	Centered	0.2mm	0.8mm	1.50mm	705-150
				2.00mm	705-200
				2.50mm	705-250
				3.00mm	705-300
				3.25mm	705-325
				3.50mm	705-350
				3.75mm	705-375
				4.00mm	705-400
				4.25mm	705-425
				4.50mm	705-450
				4.75mm	705-475
				5.00mm	705-500
				5.25mm	705-525
				5.50mm	705-550
				5.75mm	705-575
				6.00mm	705-600
				6.25mm	705-625
				6.50mm	705-650
				6.75mm	705-675
				7.00mm	705-700



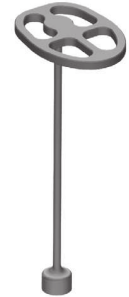
Precise Centered Partial

Material	Type	Shaft Dia.	Distal End Dia.	Length	Ref. #
Titanium	Centered	0.2mm	1.45mm cup	0.50mm	765-050
				0.75mm	765-075
				1.00mm	765-100
				1.25mm	765-125
				1.50mm	765-150
				1.75mm	765-175
				2.00mm	765-200
				2.25mm	765-225
				2.50mm	765-250
				2.75mm	765-275
				3.00mm	765-300
				3.25mm	765-325
				3.50mm	765-350
				3.75mm	765-375
				4.00mm	765-400
				4.25mm	765-425
				4.50mm	765-450
				4.75mm	765-475
				5.00mm	765-500
				5.25mm	765-525
				5.50mm	765-550



Precise Offset Total

Material	Type	Shaft Dia.	Distal End Dia.	Length	Ref. #
Titanium	Off-Centered	0.2mm	0.8mm	3.00mm	700-300
				3.25mm	700-325
				3.50mm	700-350
				3.75mm	700-375
				4.00mm	700-400
				4.25mm	700-425
				4.50mm	700-450
				4.75mm	700-475
				5.00mm	700-500
				5.25mm	700-525
				5.50mm	700-550
				5.75mm	700-575
				6.00mm	700-600
				6.25mm	700-625
				6.50mm	700-650
				6.75mm	700-675
				7.00mm	700-700


Precise Offset Partial

Material	Type	Shaft Dia.	Distal End Dia.	Length	Ref. #
Titanium	Off-Centered	0.2mm	1.45mm cup	0.50mm	751-050
				0.75mm	751-075
				1.00mm	751-100
				1.25mm	751-125
				1.50mm	751-150
				1.75mm	750-175
				2.00mm	750-200
				2.25mm	750-225
				2.50mm	750-250
				2.75mm	750-275
				3.00mm	750-300
				3.25mm	750-325
				3.50mm	750-350
				3.75mm	750-375
				4.00mm	750-400
				4.25mm	750-425
				4.50mm	750-450



Ossicular Prosthesis

Precise Centered Byte Partial

Material	Type	Distal End	Length	Ref. #
Titanium	Centered	Adjustable	0.75mm	752-075
			1.00mm	752-100
			1.25mm	752-125
			1.50mm	752-150
			1.75mm	752-175
			2.00mm	752-200
			2.25mm	752-225
			2.50mm	752-250

*May not be available in all countries



Precise Owens Assure Total

Material	Type	Shaft Dia.	Distal End Dia.	Length	Ref. #
Titanium	Off-Centered	0.2mm	0.8mm	5.00mm	602-500
				5.50mm	602-550
				6.00mm	602-600



Precise Owens Assure Partial

Material	Type	Shaft Dia.	Distal End Dia.	Length	Ref. #
Titanium	Off-Centered	0.2mm	1.45mm Cup	2.75mm	652-275
				3.00mm	652-300
				3.50mm	652-350
				4.00mm	652-400
				4.50mm	652-450



Wildcat Pro

Material	Type	Distal End	Length	Ref. #
HA/Titanium	Centered	1.00mm x 1.75mm	3.00mm	709-300
			3.50mm	709-350
			4.00mm	709-400
			4.50mm	709-450
			5.00mm	709-500
			5.50mm	709-550

Designed in conjunction with Seilesh Babu, MD, Farmington Hills, MI


HA Wildcat Four 2 Three

Material	Type	Distal End	Length	Ref. #
HA/Titanium	Centered	1.00mm x 1.78mm	3.00mm	708-300
			3.50mm	708-350
			4.00mm	708-400
			4.50mm	708-450
			5.00mm	708-500
			5.50mm	708-550

Designed in conjunction with Seilesh Babu, MD, Farmington Hills, MI


Wildcat Four 2 Three Solid

Material	Type	Distal End	Length	Ref. #
Titanium	Centered	1.00mm x 1.78mm	3.00mm	707-300
			3.50mm	707-350
			4.00mm	707-400
			4.50mm	707-450
			5.00mm	707-500
			5.50mm	707-550

Designed in conjunction with Alan Micco, MD, Chicago, IL, Cliff Megerian, MD, Cleveland, OH, Seilesh Babu, MD, Farmington Hills, MI


Wildcat Four 2 Three Hollow

Material	Type	Distal End	Length	Ref. #
Titanium	Centered	1.00mm x 1.78mm	3.00mm	706-300
			3.50mm	706-350
			4.00mm	706-400
			4.50mm	706-450
			5.00mm	706-500
			5.50mm	706-550

Designed in conjunction with Alan Micco, MD, Chicago, IL, Cliff Megerian, MD, Cleveland, OH, Seilesh Babu, MD, Farmington Hills, MI



Ossicular Prosthesis

HA Total Prosthesis

Type	Material	Shaft Dia.	Head Dia.	Length	Ref.#
Centered	HA	0.8mm	3.00mm	4.00mm	100
				6.00mm	101
				8.00mm	102
			4.00mm	4.00mm	103
				6.00mm	104
				8.00mm	105



HA Total Prosthesis

Type	Material	Shaft Dia.	Head Dia.	Length	Ref.#
Offset	HA	0.8mm	4.00mm	4.00mm	106
				6.00mm	107
				8.00mm	108



HA Total Prosthesis

Type	Material	Shaft Dia.	Head Dia.	Length	Ref.#
Notched	HA	0.8mm	4.00mm	4.00mm	109
				6.00mm	110
				8.00mm	111



HA Partial Prosthesis

Type	Material	Length	Cannulation Dia.	Head Dia.	Ref.#
Centered	HA	5.00mm	1.17mm	3.00mm	150
				4.00mm	151



HA Partial Prosthesis

Type	Material	Length	Cannulation Dia.	Head Dia.	Ref.#
Offset	HA	5.00mm	1.17mm	4.00mm	152



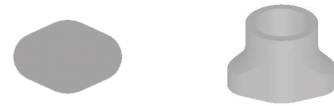
HA Partial Prosthesis

Type	Material	Length	Cannulation Dia.	Head Dia.	Ref.#
Notched	HA	5.00mm	1.17mm	4.00mm	153



HA Footplate Shoe

Material	Width	Height	Ref. #
HA	2.00mm	1.32mm	192



HA Total Strut

Material	Length	Shaft Dia.	Ref. #
HA	8.00mm	0.8mm	191



HA Partial Strut

Material	Length	Cannulation Dia.	Ref. #
HA	2.75mm	1.17mm	190-275
HA	3.90mm	1.17mm	190-390
HA	4.90mm	1.17mm	190-490



Ossicular Prostheses

Total Tilt Top

Type	Material	Length	Shaft Dia.	Head Dia.	Ref.#
Centered	Otosil / HA	8.00mm	1.00mm	3.00mm	200
				4.00mm	201



Total Tilt Top

Type	Material	Length	Shaft Dia.	Head Dia.	Ref.#
Offset	Otosil / HA	8.00mm	1.00mm	3.25mm	202
				3.50mm	207
				4.00mm	203



Total Tilt Top

Type	Material	Length	Shaft Dia.	Head Dia.	Ref.#
Notched	Otosil / HA	8.00mm	1.00mm	3.25mm	204
				3.50mm	208
				4.00mm	205



Total Tilt Top

Type	Material	Length	Shaft Dia.	Head Dia.	Ref.#
Notched	Otosil / HA	8.00mm	1.00mm	2.1mm x 2.9mm	206



Bojrab Universal

As Total		Type	Material	Head Dia.	Ref. #
Length	Shaft Dia.	Notched	Otosil/HA	4.00mm x 3.25mm	293
6.00mm	0.80mm			3.00mm	293A
As Partial					
Length	Cannulation Dia.				
2.30mm	1.17mm				



Designed in conjunction with Dennis Bojrab, MD, Farmington Hills, MI

Partial Tilt Top

Type	Material	Length	Cannulation Dia.	Head Dia.	Ref.#
Centered	Otosil / HA	6.00mm	1.12mm	3.00mm	250
				4.00mm	251


Partial Tilt Top

Type	Material	Length	Cannulation Dia.	Head Dia.	Ref.#
Offset	Otosil / HA	6.00mm	1.12mm	3.25mm	252
				3.50mm	257
				4.00mm	253


Partial Tilt Top

Type	Material	Length	Cannulation Dia.	Head Dia.	Ref.#
Notched	Otosil / HA	6.00mm	1.12mm	3.25mm	254
				3.50mm	258
				4.00mm	255


Partial Tilt Top

Type	Material	Length	Cannulation Dia.	Head Dia.	Ref.#
Notched	Otosil / HA	6.00mm	1.12mm	2.1mm x 2.9mm	256


Partial

Type	Material	Length	Cannulation Dia.	Head Dia.	Ref.#
Centered	Otosil / HA	6.00mm	1.12mm	3.00mm	270
				4.00mm	271


Partial

Type	Material	Length	Cannulation Dia.	Head Dia.	Ref.#
Offset	Otosil / HA	6.00mm	1.12mm	4.00mm	272


Partial

Type	Material	Length	Cannulation Dia.	Head Dia.	Ref.#
Notched	Otosil / HA	6.00mm	1.12mm	4.00mm	273







Stapes Prostheses

Stapes Prosthesis

Fluoroplastic Piston

Material	Loop Dia.	Shaft Dia.	Ref. #	Length
Fluoroplastic	0.6mm	0.4mm	401-350	3.50mm
			401-400	4.00mm
			401-450	4.50mm
			401-500	5.00mm
			401-600	6.00mm
	0.5mm	0.4mm	408-450	4.50mm
			408-500	5.00mm
			408-600	6.00mm
	0.6mm	0.4mm	402-350	3.50mm
			402-400	4.00mm
			402-450	4.50mm
			402-500	5.00mm
			402-600	6.00mm
			402-800	8.00mm
	0.8mm	0.4mm	403-350	3.50mm
			403-400	4.00mm
			403-450	4.50mm
			403-500	5.00mm
			403-600	6.00mm



Fluoroplastic Piston Arrigg Slit Modification

Material	Loop Dia.	Shaft Dia.	Ref. #	Length
Fluoroplastic	0.6mm	0.4mm	406-425	4.25mm
			406-450	4.50mm
			406-600	6.00mm



Titanium / Fluoroplastic Piston

Material	Type	Shaft Dia.	Ref. #	Length
Ti. / Fluoroplastic	Piston	0.6mm	409-350	3.50mm
			409-375	3.75mm
			409-400	4.00mm
			409-425	4.25mm
			409-450	4.50mm
			409-475	4.75mm
			409-500	5.00mm



Linstrom Piston

Material	Type	Shaft Dia.	Ref. #	Length
Platinum/Titanium	Piston	0.5mm	419-400	4.00mm
			419-425	4.25mm
			419-450	4.50mm
			419-475	4.75mm

Designed in conjunction with Christopher Linstrom, MD, New York, NY



Titanium Piston

Material	Type	Shaft Dia.	Ref. #	Length
Titanium	Piston	0.4mm	460-350	3.50mm
			460-375	3.75mm
			460-400	4.00mm
			460-425	4.25mm
			460-450	4.50mm
			460-475	4.75mm
			460-500	5.00mm
			460-525	5.25mm
		460-550	5.50mm	
		0.5mm	413-400	4.00mm
			413-425	4.25mm
			413-450	4.50mm
			413-475	4.75mm
		0.6mm	461-350	3.50mm
			461-375	3.75mm
			461-400	4.00mm
461-425	4.25mm			
461-450	4.50mm			
461-475	4.75mm			
461-500	5.00mm			
461-525	5.25mm			
461-550	5.50mm			



Stapes Prosthesis

Grace Piston

Material	Type	Shaft Dia.	Ref. #	Length
Platinum / Flpl	Piston	0.4mm	412-375	3.75mm
			412-400	4.00mm
			412-425	4.25mm
			412-450	4.50mm
			412-475	4.75mm
			412-500	5.00mm
		0.5mm	412-600	6.00mm
			452-375	3.75mm
			452-400	4.00mm
			452-425	4.25mm
			452-450	4.50mm
			452-475	4.75mm
		0.6mm	452-500	5.00mm
			453-375	3.75mm
			453-400	4.00mm
			453-425	4.25mm
			453-450	4.50mm
			453-475	4.75mm
453-500	5.00mm			



De la Cruz Piston

Material	Type	Shaft Dia.	Ref. #	Length
Platinum/Flpl	Piston	0.6mm	415-375	3.75mm
			415-400	4.00mm
			415-425	4.25mm
			415-450	4.50mm
			415-475	4.75mm



Designed in conjunction with Antonio De la Cruz, MD, Los Angeles, CA

MEITI Piston

Material	Type	Shaft Dia.	Ref. #	Length
Platinum/Titanium	Piston	0.5mm	418-375	3.75mm
			418-400	4.00mm
			418-425	4.25mm
			418-450	4.50mm
			418-475	4.75mm



Designed in conjunction with Dennis Bojrab, MD and Michael LaRouere, MD, Farmington Hills, MI

Super E Piston

Material	Type	Shaft Dia.	Ref. #	Length
Nitinol / Flpl	Piston	0.5mm	465-375	3.75mm
			465-400	4.00mm
			465-425	4.25mm
			465-450	4.50mm
			465-475	4.75mm
		465-500	5.00mm	
		0.6mm	466-375	3.75mm
			466-400	4.00mm
			466-425	4.25mm
			466-450	4.50mm
			466-475	4.75mm
		466-500	5.00mm	



Designed in conjunction with Dennis Bojrab, MD, Farmington Hills, MI
 *May not be available in all countries

Sanna Piston

Material	Type	Shaft Dia.	Ref. #	Length
Stainless Steel / Flpl	Piston	0.5mm	410-600	6.00mm

Designed in conjunction with Professor Mario Sanna, Piacenza, Italy



Eclipse Piston

Material	Type	Shaft Dia.	Ref. #	Length	
Nitinol/Flpl	Piston	0.4mm	464-600	6.00mm	
			0.5mm	467-375	3.75mm
				467-400	4.00mm
				467-425	4.25mm
				467-450	4.50mm
				467-475	4.75mm
				467-500	5.00mm
				467-550	5.50mm
				467-600	6.00mm
		0.6mm	468-375	3.75mm	
			468-400	4.00mm	
			468-425	4.25mm	
			468-450	4.50mm	
			468-475	4.75mm	
			468-500	5.00mm	
			468-525	5.25mm	
			468-600	6.00mm	



Stapes Prosthesis

Eclipse Piston De la Cruz

Material	Type	Shaft Dia.	Ref. #	Length
Nitinol/Flpl	Piston	0.6mm	469-400	4.00mm
			469-425	4.25mm
			469-450	4.50mm
			469-475	4.75mm

Designed in conjunction with Antonio De la Cruz, MD, Los Angeles, CA



Eclipse Titanium Piston

Material	Type	Shaft Dia.	Ref. #	Length
Nitinol/Titanium	Piston	0.5mm	470-400	4.00mm
			470-425	4.25mm
			470-450	4.50mm
			470-475	4.75mm
	Piston	0.6mm	471-400	4.00mm
			471-425	4.25mm
			471-450	4.50mm
			471-475	4.75mm

As suggested by Frank Warren, MD, Portland, OR and Aaron Benson, MD, Toledo, OH



Eclipse Flat Ribbon Eclipse

Material	Type	Shaft Dia.	Ref. #	Length
Nitinol/Flpl	Piston	0.5mm	473-400	4.00mm
			473-425	4.25mm
			473-450	4.50mm
			473-475	4.75mm
			473-500	5.00mm
	Piston	0.6mm	472-400	4.00mm
			472-425	4.25mm
			472-450	4.50mm
			472-475	4.75mm
			472-500	5.00mm



Eclipse Malleus Piston

Material	Type	Shaft Dia.	Ref. #	Length
Nitinol/Flpl	Piston	0.6mm	442-550	5.50mm
			442-600	6.00mm
			442-650	6.50mm
			442-700	7.00mm
			442-800	8.00mm

Designed in conjunction with Marcus Atlas, MD, FRACS, Perth, Australia and Michael B. Gluth, MD, Chicago, IL



Eclipse Malleus Piston Measuring Rod

Ref. #	Material
901	Titanium

Designed in conjunction with Marcus Atlas, MD, FRACS, Perth, Australia and Michael B. Gluth, MD, Chicago, IL



Megerian Nitinol SRP

Material	Type	Shaft Dia.	Ref. #	Length
Nitinol/Flpl	Piston	0.6mm	758-400	4.00mm
			758-425	4.25mm
			758-450	4.50mm
			758-475	4.75mm
			758-500	5.00mm

Designed in conjunction with Cliff Megerian, MD, FACS, Cleveland, OH



Stapes Prosthesis

Robinson Bucket Handle

Material	Type	Shaft Dia.	Ref. #	Length
Titanium	Standard	0.4mm	420-350	3.50mm
			420-375	3.75mm
			420-400	4.00mm
			420-425	4.25mm
			420-450	4.50mm
			420-475	4.75mm
			420-500	5.00mm
		0.6mm	422-350	3.50mm
			422-375	3.75mm
			422-400	4.00mm
			422-425	4.25mm
			422-450	4.50mm
			422-475	4.75mm
		0.8mm	424-400	4.00mm
			424-425	4.25mm
			424-450	4.50mm
			424-500	5.00mm



Lippy Bucket Handle

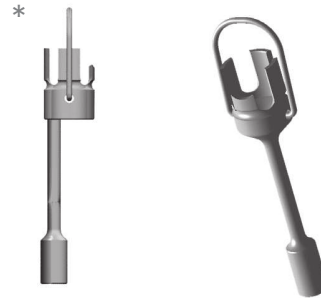
Material	Type	Shaft Dia.	Ref. #	Length
Titanium	Notched	0.4mm	421-350	3.50mm
			421-375	3.75mm
			421-400	4.00mm
			421-425	4.25mm
			421-450	4.50mm
			421-475	4.75mm
			421-500	5.00mm
			421-550	5.50mm
			421-600	6.00mm
		0.6mm	423-350	3.50mm
			423-375	3.75mm
			423-400	4.00mm
			423-425	4.25mm
423-450	4.50mm			
0.8mm	425-350	3.50mm		
	425-375	3.75mm		
	425-400	4.00mm		
	425-425	4.25mm		
	425-450	4.50mm		
	425-475	4.75mm		
	425-500	5.00mm		



Stapes Prosthesis

Bartels Bucket Handle

Material	Type	Shaft Dia.	Ref. #	Length	
Titanium	Adjustable Well	0.4mm	427-350	3.50mm	
			427-375	3.75mm	
			427-400	4.00mm	
			427-425	4.25mm	
			427-450	4.50mm	
			427-475	4.75mm	
			427-500	5.00mm	
			0.6mm	426-350	3.50mm
				426-375	3.75mm
				426-400	4.00mm
	426-425	4.25mm			
	426-450	4.50mm			
	426-475	4.75mm			
	*Offset	0.6mm	428-400	4.00mm	
			428-450	4.50mm	
			428-500	5.00mm	



Designed in conjunction with Loren Bartels, MD, Tampa, FL

Grace Bucket Handle Offset

Material	Type	Shaft Dia.	Ref. #	Length
Titanium/Ni	Notched	0.4mm	430-400	4.00mm
			430-425	4.25mm
			430-450	4.50mm
			430-475	4.75mm
			430-500	5.00mm
			430-550	5.50mm
			430-600	6.00mm



